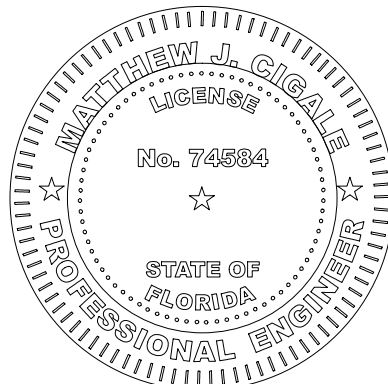
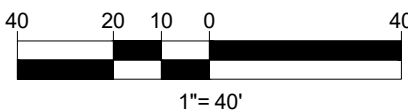
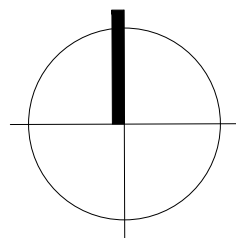


COSTCO
WHOLESALE
CORPORATION
999 LAKE DRIVE
ISSAQUAH, WA 98027
T: 425.313.8100
www.costco.com



6300 NW 31st AVENUE
FORT LAUDERDALE, FL 33309
PH: (954) 202-7000
www.ThomasEngineeringGroup.com



July 30, 2025
FLORIDA BUSINESS CERT. OF AUTH. No. 27528

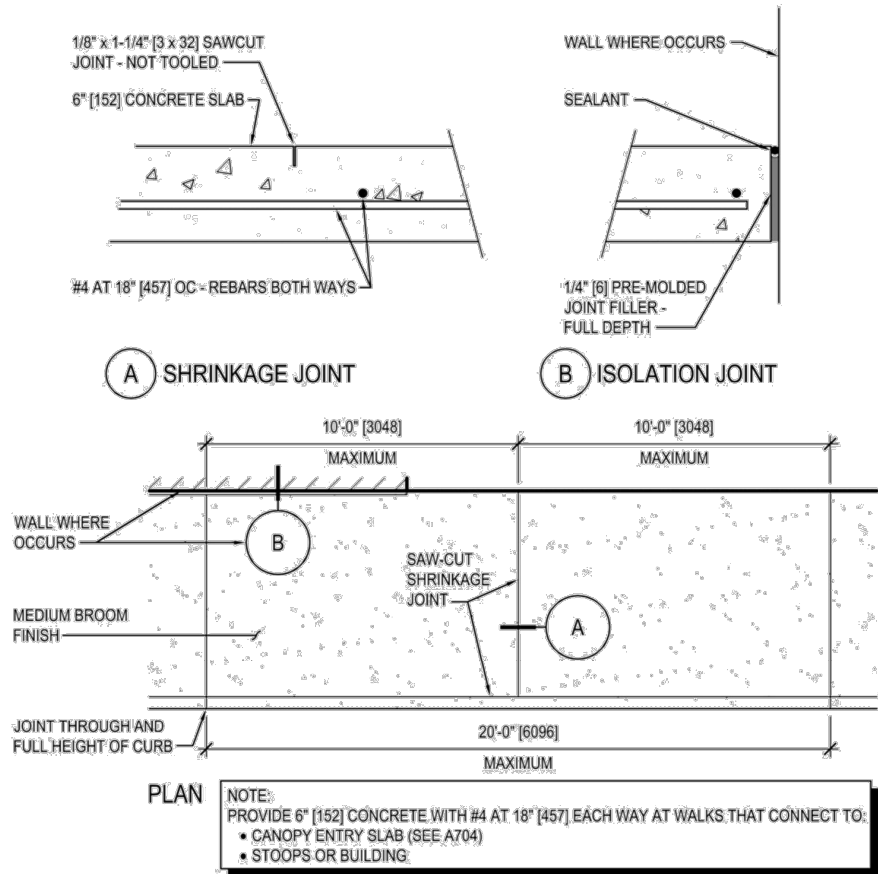
△	DATE	DESCRIPTION

F240051
JULY 23, 2025

SITE DETAILS

C-06.2

COSTCO WHOLESALE DEVELOPMENT REQUIREMENTS
SECTION 09 SITE ELEMENTS AND IMPROVEMENTS

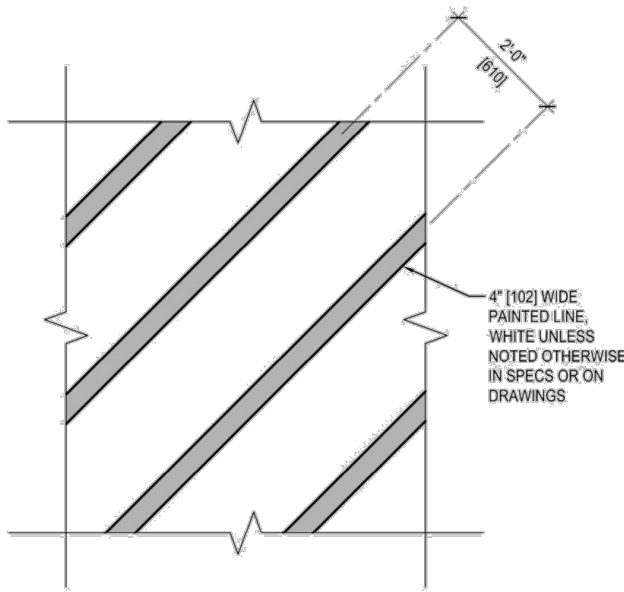


DETAIL 09_11

Version 2022 - 10/28/2022

PAGE 27

COSTCO WHOLESALE DEVELOPMENT REQUIREMENTS
SECTION 09 SITE ELEMENTS AND IMPROVEMENTS



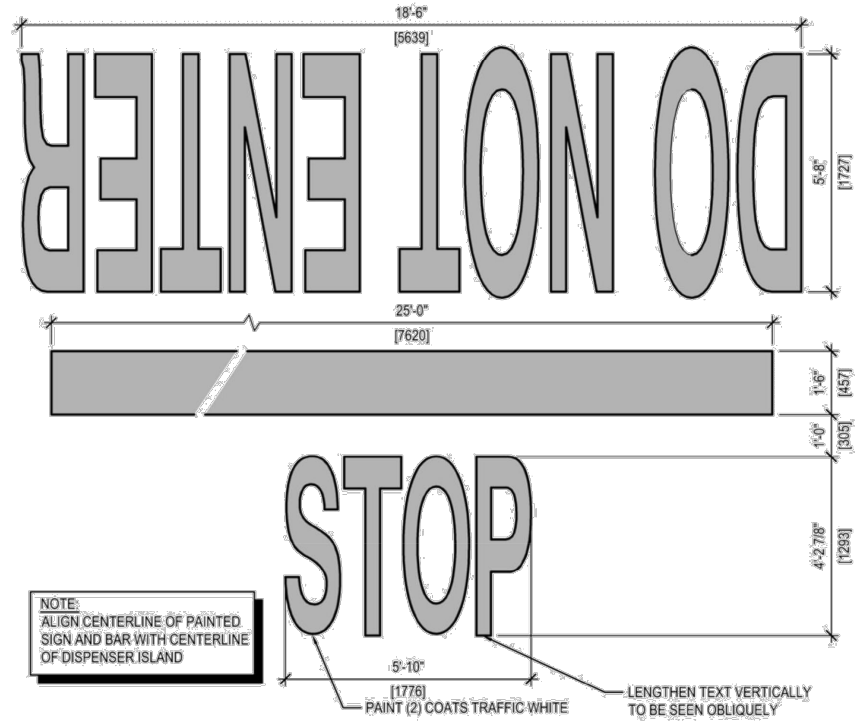
PAINTED STRIPE

DETAIL 09_12

Version 2022 - 10/28/2022

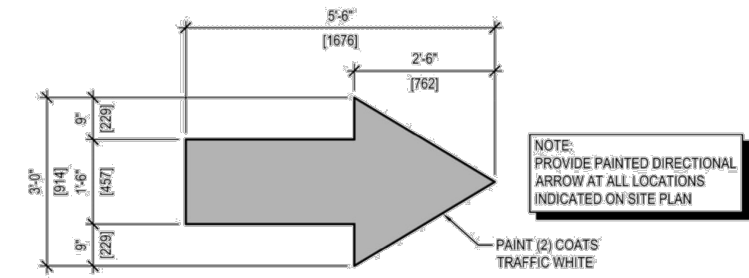
PAGE 28

COSTCO WHOLESALE DEVELOPMENT REQUIREMENTS
SECTION 09 SITE ELEMENTS AND IMPROVEMENTS



PAINTED DETAIL

TRAFFIC CONTROL STRIPING



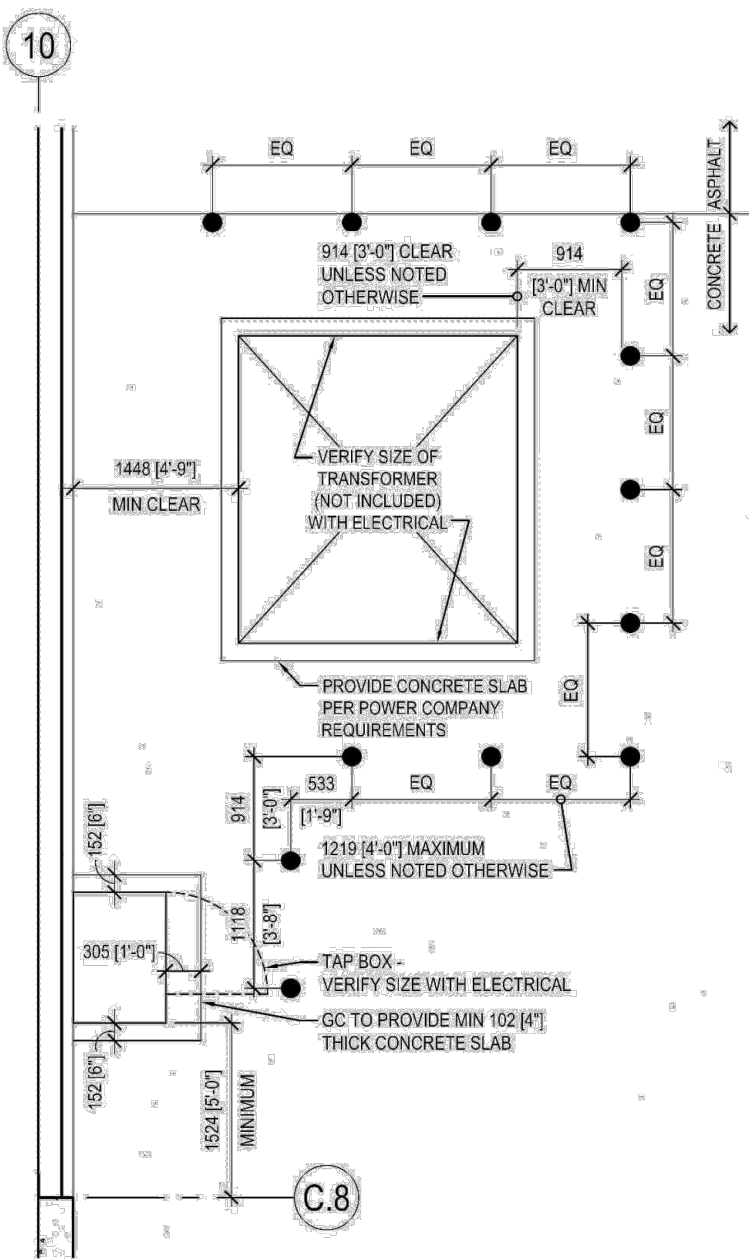
DIRECTIONAL ARROW

DETAIL 09_13

Version 2022 - 10/28/2022

PAGE 29

COSTCO WHOLESALE DEVELOPMENT REQUIREMENTS
SECTION 09 SITE ELEMENTS AND IMPROVEMENTS



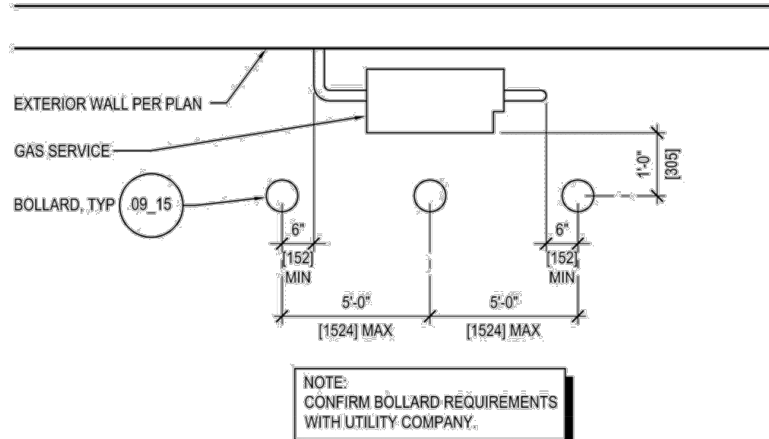
BOLLARDS AT TRANSFORMER

DETAIL 09_16

Version 2022 - 10/28/2022

PAGE 32

COSTCO WHOLESALE DEVELOPMENT REQUIREMENTS
SECTION 09 SITE ELEMENTS AND IMPROVEMENTS



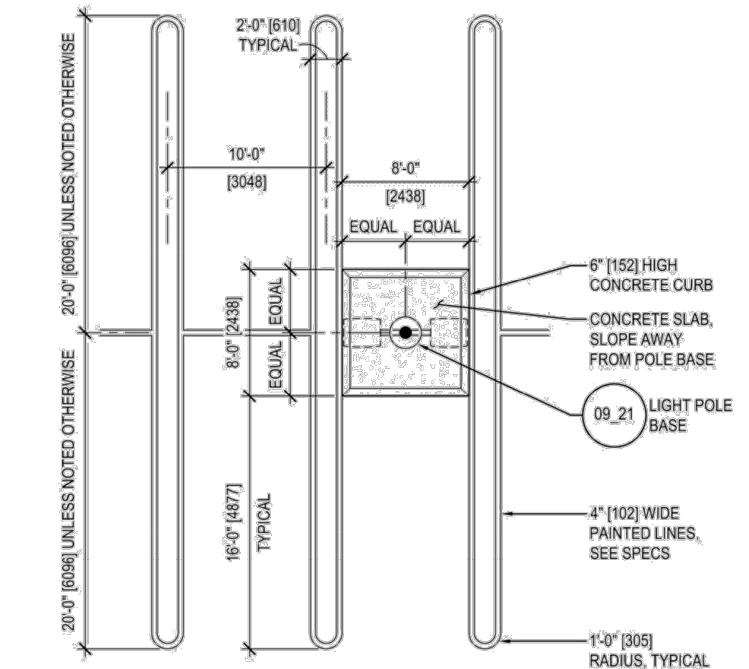
TYPICAL EXTERIOR BOLLARD

DETAIL 09_18

Version 2022 - 10/28/2022

PAGE 34

COSTCO WHOLESALE DEVELOPMENT REQUIREMENTS
SECTION 09 SITE ELEMENTS AND IMPROVEMENTS



ISLAND AT LIGHT POLE BASE

DETAIL 09_22

Version 2022 - 10/28/2022

PAGE 37